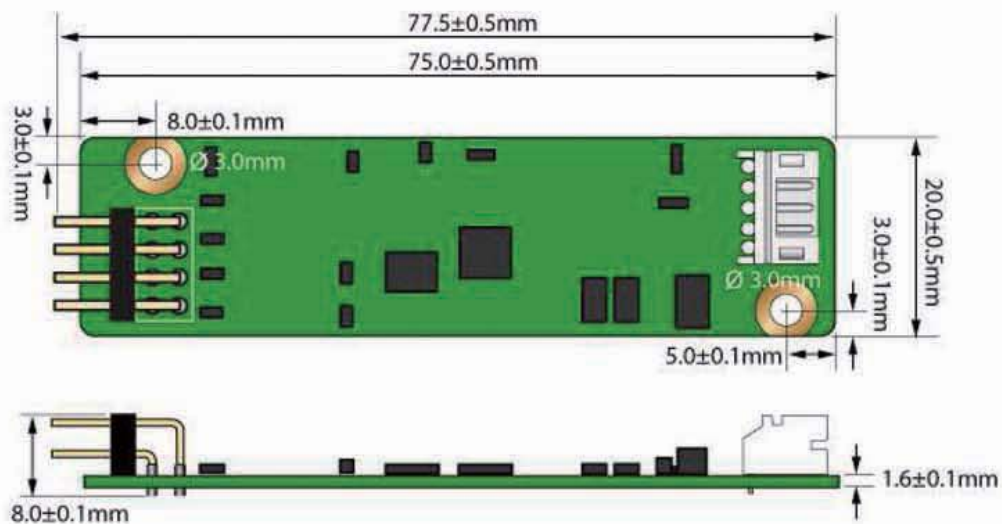


## 8-wire USB Touch Panel Controller

eGalax\_eMPIA launched touch control board to meet latest Restriction of Hazardous Substances (RoHS) Directive. This touch panel controller provides the optimistic performance of your analog resistive touch panels for 8-wire models. It communicates with PC system directly through USB connector. You can see how superior the design is in sensitivity, accuracy and friendly operation. The touch panel driver emulates mouse left and right button function and supports operation systems as following.

OS	Version	Interfaces
<b>Windows</b>	Windows 7, Vista, XP/2000, ME/98 Windows XP Tablet PC edition Windows CE 2.12/3.0/4.0/5.0/6.0 Windows Embedded XP	RS232/USB/ PS2
<b>Windows</b>	Windows NT4, Windows 95	RS232/PS2
<b>Linux</b>	Support kernel 2.4.x / 2.6.x with XFree 4.x / xorg 6.7 to 7.5 ( Up to X server 1.8.x ) The new Linux public driver supports most of the Linux distributions 32/64 versions, including: CentOS, Debian, Fedora, Gentoo, Mandrake (Mandriva), Red Hat, Ubuntu(Xubuntu), Slackware, SuSE(open SuSE) etc.	RS232/USB/ PS2 (up to Kernel 2.6.x)
	Android 2.2 – Google Meego 1.x – Intel Nokia	RS232/USB I2C
<b>DOS</b>	DOS 6.22	RS232/PS2
<b>Mac</b>	Mac OS9, Mac OS X (PowerPC, Intel CPU)	USB

### Controller:



**Specifications:**

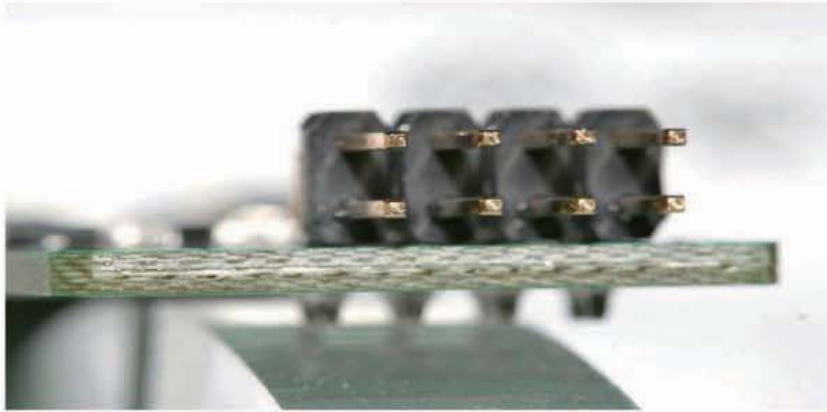
<b>USB Type Controller</b>	
Circuit Board Dimension	21.5mm x 80mm (0.85inches x 3.15inches)----(8-Wire)
Power Requirements	D.C. +5V (100mA typical, 50mV peak to peak maximum ripple and noise)
Operating Temperature	-25 to 85 °C
Storage Temperature	-55 to 150 °C
Relative Humidity	95% at 60 °C
Interface	Bi-directional RS-232 serial communication USB: 1.1 Full Speed (12Mbps)
Protocol	No parity, 8 data bits, 1 stop bit, 9600 baud (N, 8, 1, 9600)
Resolution	2048x2048 resolution
Report rate	RS232: Max. 160 points/sec USB: Max. 200 points/sec
Response time	Max. 20 ms
Attached Cable	RS232: 180cm shielded cable with 9-pin D-sub connector USB: 180cm shielded cable with USB-A connector
Regulatory Approvals	FCC-B , CE, Unaffected by EMI from other nearby CRTs and other display devices CRTs
EMI	Unaffected by environmental EMI
Panel resistance	4, 8 wire resistive model: 200 ~ 900 ohm 5 wire resistive model: 50 ~ 200 ohm
MTBF	200,000 hrs

**Product Package:**

- (1) ETP-MB-S8000UPGG (8 wire USB control board)
- (2) ETP-CB-SXU00 (USB cable)
- (3) ETP-CB-8XN00 (8 pin Flat cable)

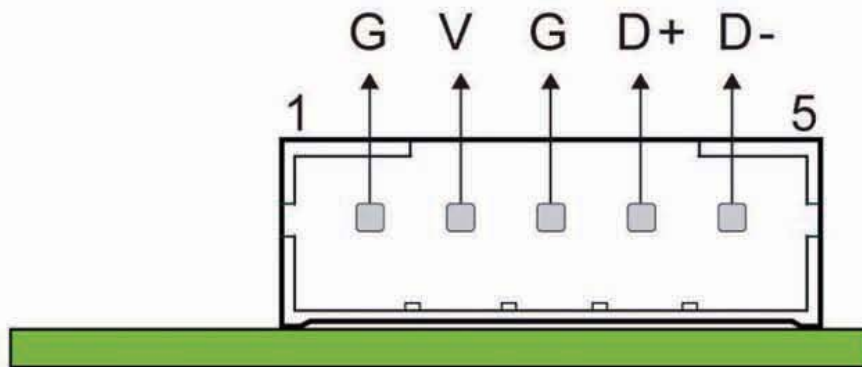
**Controller Panel Pin Assignment**

X+	Y+	X-	Y-
X+ ref	Y+ ref	X- ref	Y- ref



**Controller Wafer Pin Assignment:**

*USB Interface*



**Flat Cable Pin Assignment:**